

**WE DELIVER
END TO END
BUILDINGS SOLUTIONS**

Ecologi



WHO WE ARE

Ecologi is a dynamic engineering system integrator with a specialization in serving Special Purpose Buildings. Our unique approach combines the expertise of five distinct companies: 365 Ecology, ECO HVAC, ECO FLS, ECO IS, and Zuidas. These companies collectively enable us to provide comprehensive, integrated solutions tailored specifically for the needs of special purpose buildings.

When you choose Ecologi, you choose a partner that is dedicated to engineering excellence, sustainability, and the success of your special purpose and smart building projects. We eagerly anticipate collaborating with you to make a lasting, positive impact on your unique endeavors. Welcome to Ecologi – Where Engineering Meets Innovation.

OUR COMPANIES

- **365 ECOLOGY:** Leaders in Integrated Electromechanical Solutions, 365 Ecology specializes in seamlessly integrating systems to optimize functionality, sustainability, and performance in special purpose and smart buildings.
- **Eco HVAC:** At Eco HVAC, our focus is on Providing functional, energy efficient, and smart HVAC solutions that can fit all building sectors cooling, heating, ventilation, and indoor air quality needs.
- **ECO FLS** (Firefighting and Life Safety): Safety is paramount at Eco FLS, where we offer state-of-the-art Firefighting and Life Safety solutions meticulously designed to safeguard lives and property within these unique structures.
- **ECO IS** (Intelligent Systems): Eco IS specializing in Intelligent Systems for special purpose and smart buildings. We harness data, automation, and connectivity to enhance productivity, safety, and control.
- **ZUIDAS:** Zuidas is your partner for crafting Finishing and Interior Solutions that elevate the aesthetics and functionality of your space.

OUR COMPANIES

Ecologi



ECO HVAC

ECO FLS
Fire and Life Safety

**ECO INTELLIGENT
SYSTEMS**

ZUIDAS
By 365Ecology

STRATEGIC PARTNER

ABEC



ON A MISSION

to disrupt the buildings
industry with new services,
technologies & systems
integrations

JOIN US on our mission as we
revolutionize the buildings industry

WE DELIVER **END TO END** BUILDINGS SOLUTIONS



Special Purpose
Buildings



Intelligent Electromechanical
Solutions



Finishing & interiors
solutions



Facility management
& industrial solutions



HVAC Solutions



Life safety & fire - Fighting
solutions



Automation &
security solutions


At Ecologi, our commitment goes beyond engineering solutions; we deliver end-to-end services that drive the evolution of building efficiency. From concept to execution, we guide your project through every phase, optimizing processes and systems for maximum efficiency, sustainability, and performance.



BUILDING SERVICES **PROCESS**

WHY

BECAUSE WE ARE
driving the building
efficiency evolution



BUILDING SERVICES PROCESS

01



DESIGN MANAGEMENT

Recruiting the most adequate designer and managing the project.

02



DESIGN CONCEPT

Designing the building from the basis of design till the (IFC) is produced.

03



DESIGN REVIEW

making sure the design made is the optimum one.

04



DESIGN VALUE ENGINEERING

Maintaining the function with the best initial and/or running cost using components with higher life time.

1. Life safety plans.
2. Security plans.
3. Smart systems implementation.
4. Finishing/interior modular solutions.

05



TENDERING PROCESS

Pricing with the optimum technical basis.

06



PROJECT PLANNING

creating a proper time schedule for the project and illustrating its milestones and planning the best way to install it.

07



PROCUREMENT MANAGEMENT

Reviewing technically and financially the procurement process to ensure that the client is taking the best quality with the best price possible.

08



PMO SYSTEM OF SITE MANAGEMENT

Monitoring all project disciplines with respect to time scheduling, procurement, execution and shipment, according to company policies, and applying standard codes.

09



FACILITY MANAGEMENT

Our services are focused on the efficient and effective delivery of logistics and other support services like regular maintenance, emergency maintenance, and any other services related to the building.

SUCCESS PARTNERS

ECO HVAC

ECO FLS
Fire and Life Safety

**ECO INTELLIGENT
SYSTEMS**



Phirex Australia
Fire and Environmental Protection to the world



Ecologi

A circular graphic composed of many thin, overlapping, wavy lines in various colors (blue, green, yellow, red, orange) that form a globe-like shape, positioned behind the 'i' in the word 'Ecologi'.

DRIVING THE BUILDING EFFICIENCY EVOLUTION

A series of overlapping, semi-transparent yellow and orange geometric shapes, including triangles and polygons, located in the bottom right corner of the image.

Snacks Factory

1- The HVAC system is consisting of a chilled water system, AHUS, FCUS, and several types of ventilation for the building.

2- Firefighting system consisting of a traditional system and other systems.

3- Plumbing system including, drainage and Storm piping, plumbing specialties, and water distribution piping.

4- Light current systems

5- Electrical works consisting of a transformer, medium voltage Switchgear, UPS, Cables, Lighting fixture, Central Battery, wiring device, PVC conduit, and EMT conduit.



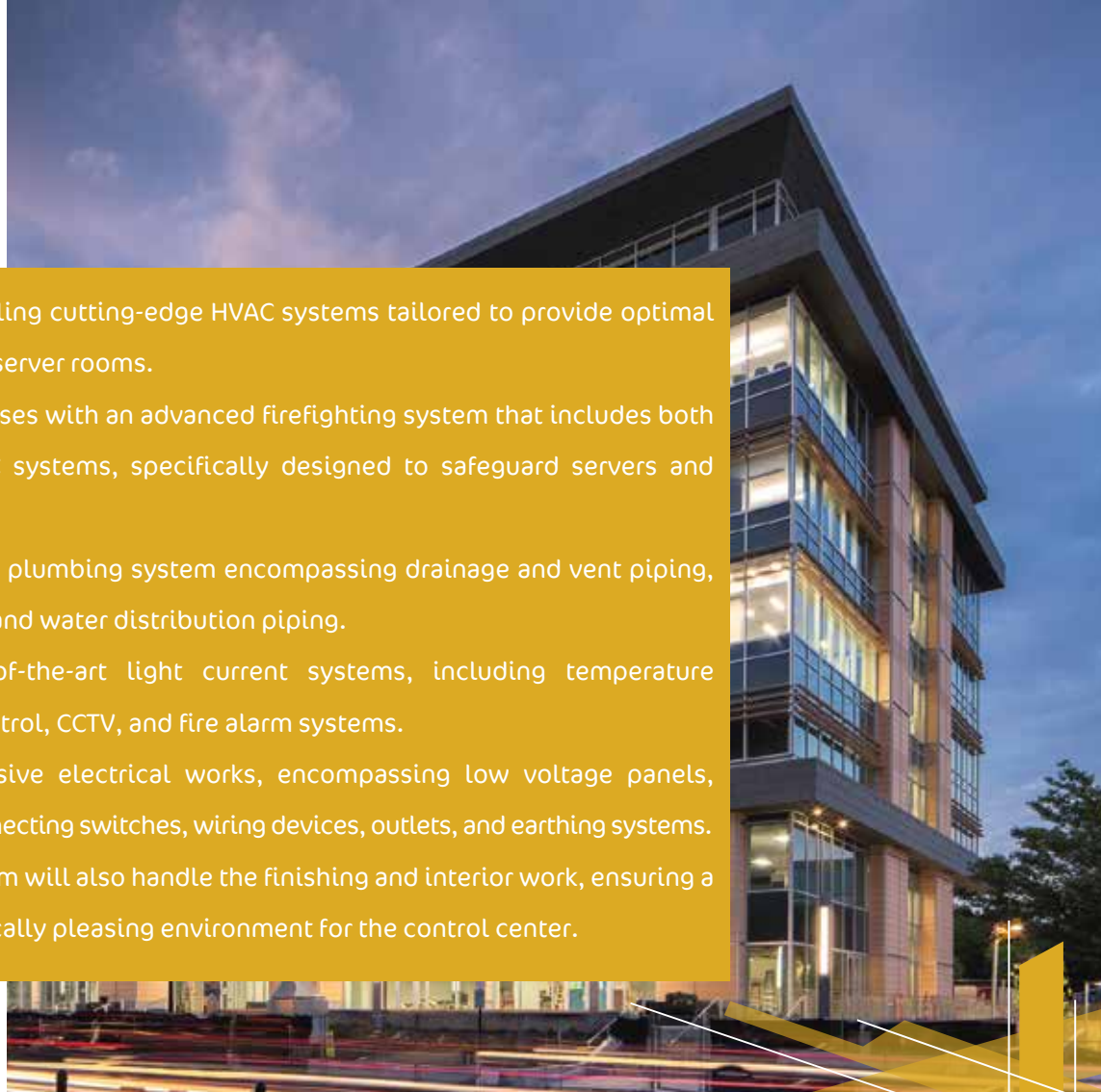
NOVA

- 1- HVAC system is consisting of a VRF system and several types of ventilation for the building complete with an automatic control system.
- 2- Firefighting system consisting of a traditional system, Aerosol & CO2 systems for electrical panels & rooms, FM200 for server rooms, fire extinguishers.
- 3- Plumbing system including, drainage and vent piping, plumbing specialties, and water distribution piping.
- 4- Light current systems including CCTV system, Fire alarm system.
- 5- Electrical works consisting of yard lighting, Low voltage panels, and cables, lighting & disconnecting switches, wiring devices, all kinds of outlets, and earthing systems.



ATRIO

- 1- Designing and installing cutting-edge HVAC systems tailored to provide optimal comfort in offices and server rooms.
- 2- Equipping the premises with an advanced firefighting system that includes both traditional and NOVEC systems, specifically designed to safeguard servers and batteries rooms.
- 3- Creating an efficient plumbing system encompassing drainage and vent piping, plumbing specialties, and water distribution piping.
- 4- Setting up state-of-the-art light current systems, including temperature monitoring, access control, CCTV, and fire alarm systems.
- 5- Carrying out extensive electrical works, encompassing low voltage panels, cables, lighting, disconnecting switches, wiring devices, outlets, and earthing systems.
- 6- Additionally, our team will also handle the finishing and interior work, ensuring a seamless and aesthetically pleasing environment for the control center.

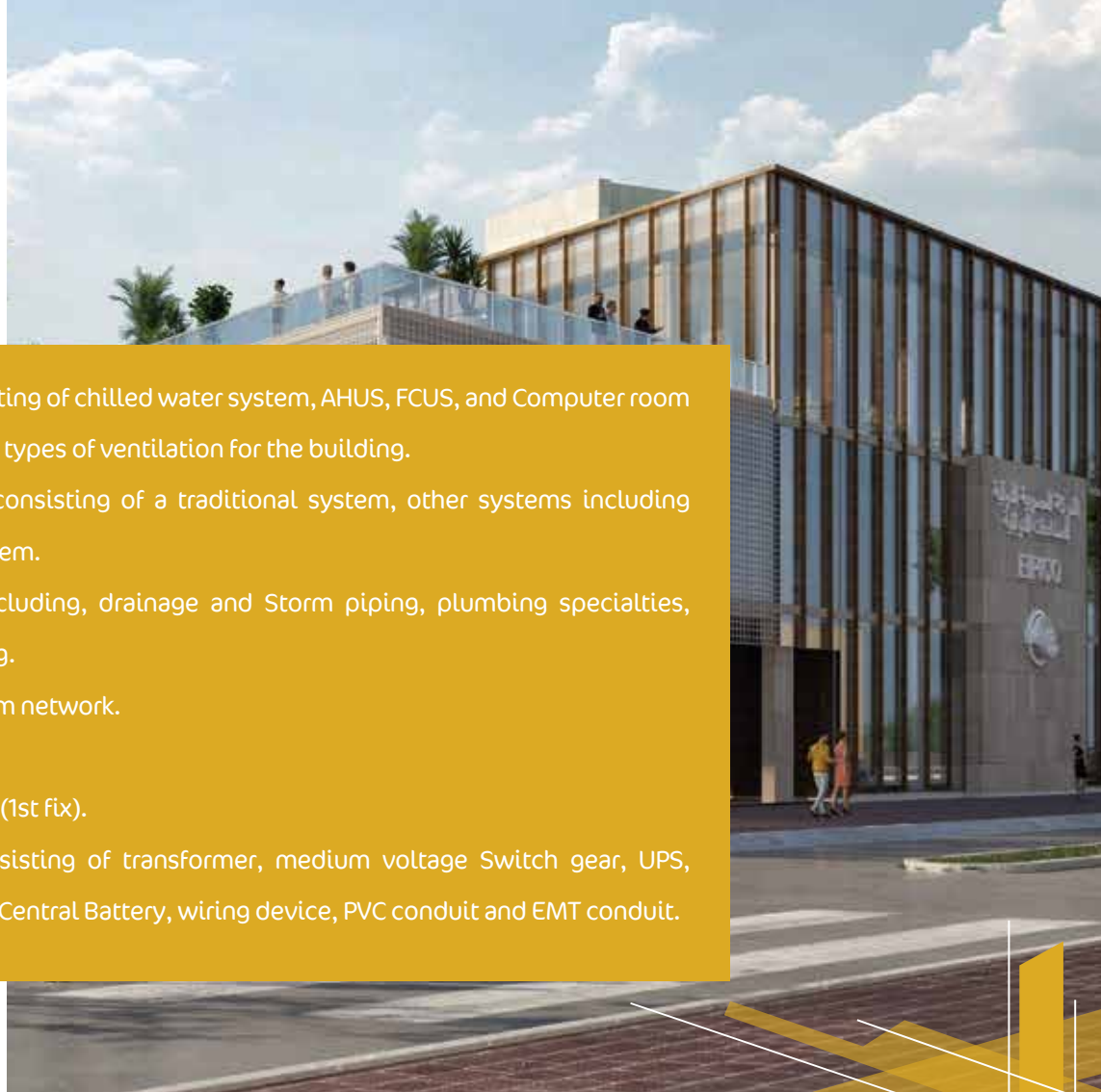


PARAGON

Developments

- 1- HVAC system is consisting of chilled water system, several types of ventilation for the building complete with automatic control system.
- 2- Firefighting system consisting of a traditional system, Aerosol & CO2 systems for electrical panels & raud rooms, and fire extinguishers.
- 3- Plumbing system including, drainage and vent piping, plumbing specialties, and water distribution piping.
- 4- Light current systems including CCTV, Fire alarm, and smart systems.
- 5- Electrical works.





1- HVAC system is consisting of chilled water system, AHUS, FCUS, and Computer room Air conditioners. several types of ventilation for the building.

2- Firefighting system consisting of a traditional system, other systems including NOVEC, Foam water system.

3- Plumbing system including, drainage and Storm piping, plumbing specialties, water distribution piping.

4- Compressed air system network.

5- Irrigation system.

6- Light current systems (1st fix).

7- Electrical works consisting of transformer, medium voltage Switch gear, UPS, Cables, Lighting fixture, Central Battery, wiring device, PVC conduit and EMT conduit.



1- The HVAC system is consisting of a VRF System and several types of ventilation for the building complete with the automatic control system.

2- Firefighting system consisting of a traditional wet water system, NOVEC, Foam water system, CO2 systems for electrical panels & rooms, and fire extinguishers.

Renovation of NDED Control Center - LOT3

- 1- Designing and installing cutting-edge HVAC systems tailored to provide optimal comfort in offices and server rooms.
- 2- Equipping the premises with an advanced firefighting system that includes both traditional and NOVEC systems, specifically designed to safeguard servers and batteries rooms.
- 3- Creating an efficient plumbing system encompassing drainage and vent piping, plumbing specialties, and water distribution piping.
- 4- Setting up state-of-the-art light current systems, including temperature monitoring, access control, CCTV, and fire alarm systems.
- 5- Carrying out extensive electrical works, encompassing low voltage panels, cables, lighting, disconnecting switches, wiring devices, outlets, and earthing systems.
- 6- Additionally, our team will also handle the finishing and interior work, ensuring a seamless and aesthetically pleasing environment for the control center.





The HVAC system is consisting of a chilled water system, AHUS, FCUS, and several types of ventilation for the building.



Yeast **Factory**

The designed and installed a system to control the temperature and humidity in yeast manufacturing rooms to levels required by the process team.



JTI

1-HVAC system is consisting of VRF system, several types of ventilation for the building complete with automatic control system.
2-Electrical works consisting of All Lighting system for the building and cctv system



HVAC system is consisting of a DX Package system and several types of ventilation for the building complete with an automatic control system.

A large, ornate, multi-story building with a light yellow facade and green window frames. The building features multiple balconies with white railings and several flags flying from poles. The architecture is a blend of classical and modern styles, with arched windows and decorative elements. The sky is blue with some clouds.

Salamlek Palace

HVAC system is consisting of a VRF system and several types of ventilation for the building complete with an automatic control system.

An aerial photograph of the Saint Catherine resort in a desert landscape. The resort features a large, multi-story hotel building with a modern architectural style, surrounded by landscaped grounds with trees and pathways. In the background, a large, rugged mountain rises under a clear sky. The foreground shows a swimming pool and a covered walkway.

Saint Catherine

HVAC system is consisting of a VRF system and several types of ventilation for the building complete with an automatic control system.



RSA

SECURITY™

HVAC system is consisting of a VRF system and several types of ventilation for the building complete with an automatic control system.



**ELSEWEDY
EDUCATION**

HVAC system is consisting of a VRF system and several types of ventilation for the building complete with an automatic control system.


**The
Knowledge
Hub
University**



The HVAC system is consisting of a chilled water system, AHUS, and several types of ventilation for the building.

The image shows a modern office interior. In the center, there is a large, vertical living wall with a green plant background and the EY logo in gold. To the right, there are large windows offering a view of a city skyline. In the foreground, there is a blue curved sofa and a wooden planter box with several small green plants. A yellow and white graphic overlay is on the left side of the image, containing the EY logo and a text box.

EY

HVAC system is consisting of a VRF system and several types of ventilation for the building complete with an automatic control system.



HVAC system and several types of ventilation for the building complete with an automatic control system .

A photograph of a modern multi-story building with a glass curtain wall. The building is reflected in the glass. In the foreground, there are several tall palm trees. The sky is clear and blue. The building has a grid-like structure with dark frames around the windows.

McKinsey&Company

HVAC system is consisting of a VRF system and several types of ventilation for the building complete with an automatic control system.



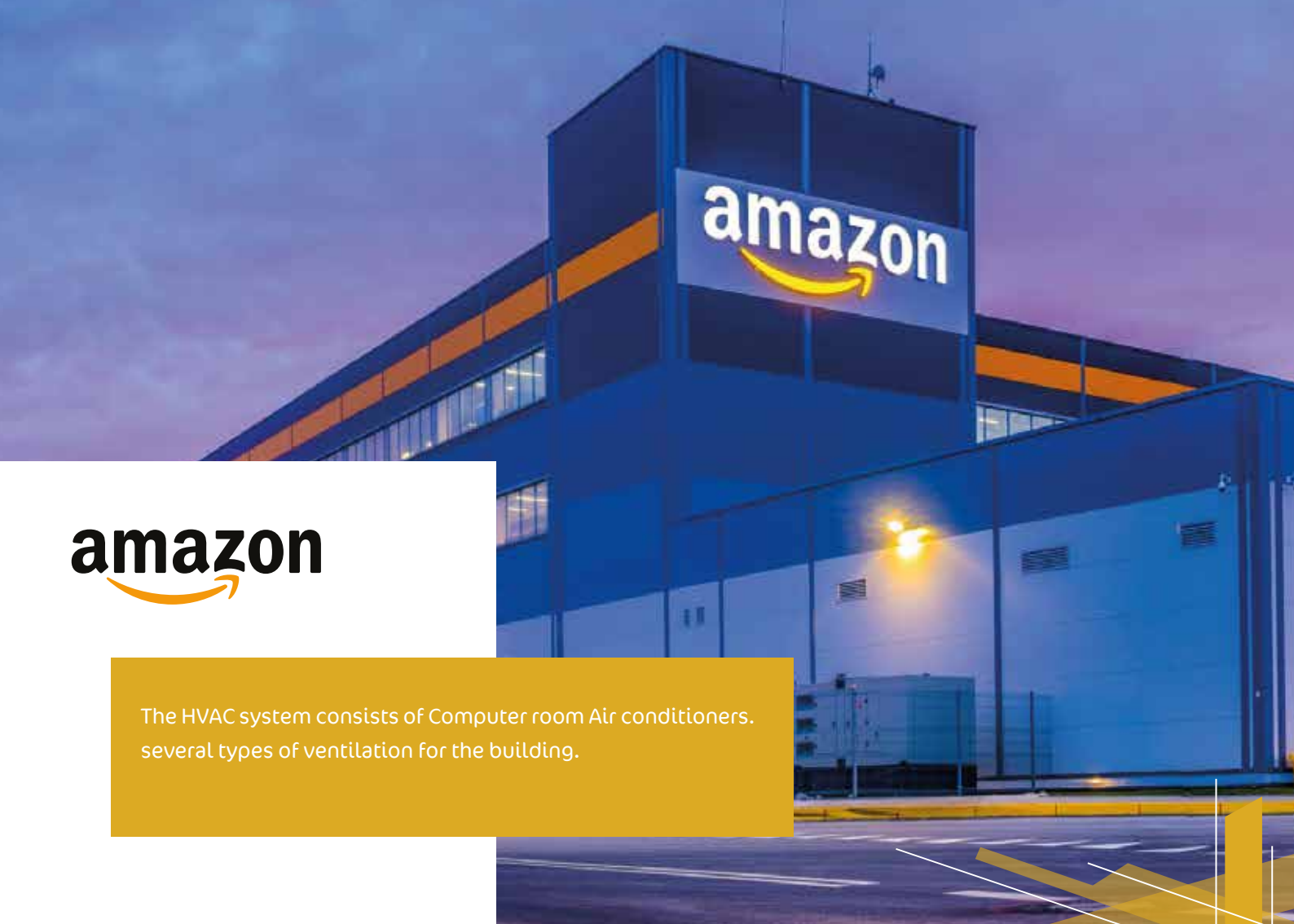
PIXELOGIC

HVAC system is consisting of a VRF system and several types of ventilation for the building complete with an automatic control system.



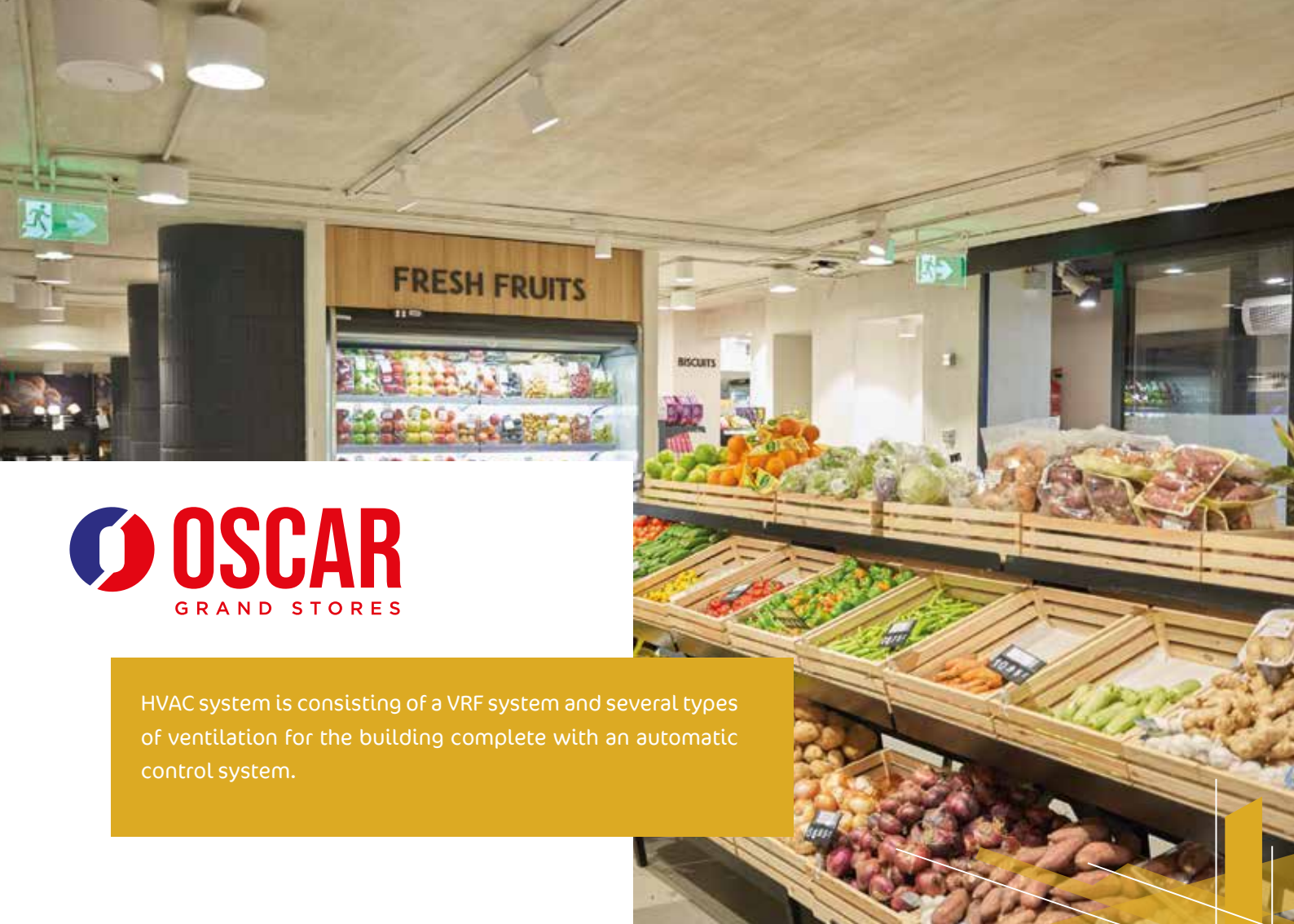
HVAC system is consisting of a VRF system and several types of ventilation for the building complete with an automatic control system.





amazon

The HVAC system consists of Computer room Air conditioners.
several types of ventilation for the building.



HVAC system is consisting of a VRF system and several types of ventilation for the building complete with an automatic control system.



بَنكُ فَیصَلَّالْإِسْلَامِیِّ الْمَصْرِیِّ
FAISAL ISLAMIC BANK OF EGYPT

The HVAC system is consisting of a VRF system and several types of ventilation for the building complete with an automatic control system.



HVAC system is consisting of a VRF system and several types of ventilation for the building complete with an automatic control system.



HVAC system is consisting of a VRF system and several types of ventilation for the building complete with an automatic control system.



Le MERIDIEN

Le MERIDIEN

supply and apply Sabiana FCUs for the renovation of
60 rooms



HVAC system is consisting of a VRF system and several types of ventilation for the building complete with an automatic control system.



Some of Our Clients

amazon.com

ELSEWEDY
EDUCATION

Le MERIDIEN
HOTELS & RESORTS

HILTON
WORLDWIDE

DP WORLD

Spinneys
The fresher experience

Lulu

SUMITOMO

RSA
SECURITY™

RA'A

vodafone

McDonald's

QNB

IB

MAHGOUB
CERAMIC & PORCELAIN

MADKOUR

التجاري وفا بنك
Attijariwafa bank

مورسفات مصر
MISR PHOSPHATE

EFGBC





    Ecologi
 info@ecologi.com
 www.ecologieg.com

